

# Cable and Hose Reels / Balancer

Program 0402



**CONDUCTIX**  
wampfler

DELACHAUX GROUP



# Contents

---

## Spring Operated Cable Reels

Cable Reel . . . . .	5
Barrier Rope Reel . . . . .	7

---

## Spring Operated Hose Reels

Hose Reel enclosed design . . . . .	9
Hose Balancer . . . . .	10
Installation Example Hose Reels exposed design . . . . .	11

---

## Accessories for Cable and Hose Reels

Roller Guide. . . . .	15
Cable Supporting Roller . . . . .	16
Single Rollers. . . . .	17
Round Rubber End Stop . . . . .	18

---

## Retractors

Retractors without Blocking Device . . . . .	19
Retractors with Blocking Device . . . . .	21

---

## Balancers

Balancers with Perfect Balance . . . . .	23
Balancer with Optimum Balance of Weight. . . . .	24

---

## Accessories for Balancer

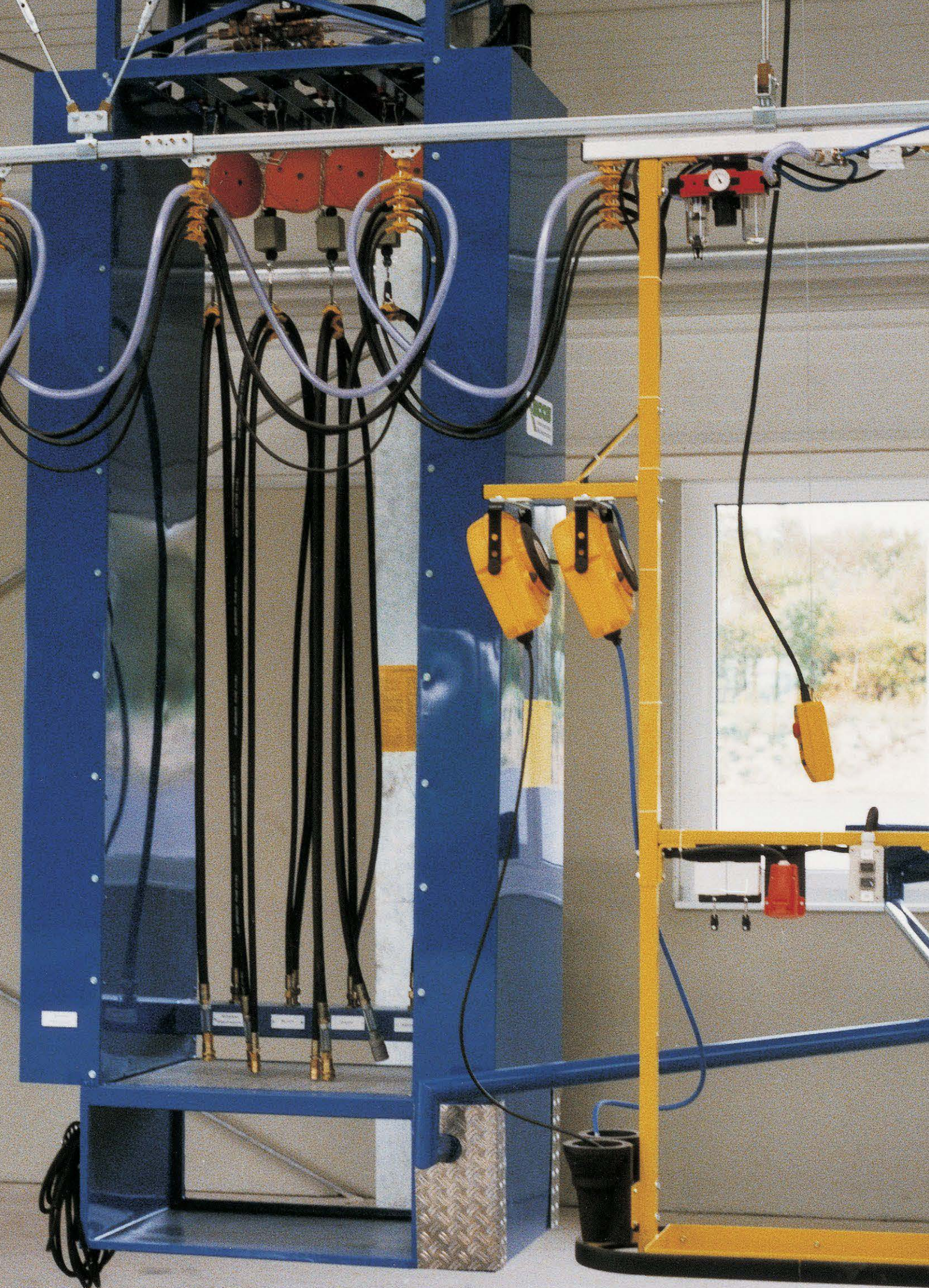
Spring safety hook . . . . .	27
Safety Chain . . . . .	27
Release Chain . . . . .	27

---

## Application Directives Information

Cable and Hose Reels . . . . .	28
Balancer . . . . .	28
Warning . . . . .	28
Information . . . . .	28

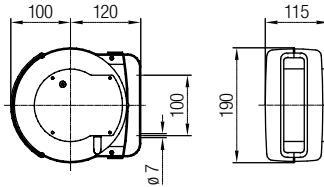






# Spring Operated Cable Reels

## Cable Reel 040610

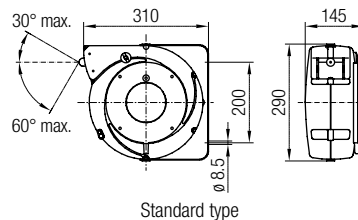


### Technical details

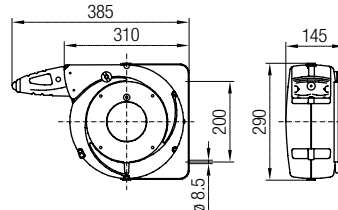
- Case: plastic
- Protection type: IP 42
- Voltage: max. 500V
- Cable: H05VV-F
- Cable outside reel 1 m
- Operating temperature: -5°C to +40°C
- Manufactured according to EN 61242 and EN 60335-1
- Overheating protection installed
- Backstop with toothed locking device
- Double earth connection

Order No.	No. of Cores + Cross Section [mm <sup>2</sup> ]	Coiled Length [m]	Cable Outer- $\phi$ [mm]	Cable Wound up [W]	Voltage [V]	Weight [kg]
040610-02x1.0	2x1.0	7	6.5	1100	230	3.0
040610-02x1.5	2x1.5	5	7.5	1300		
040610-03x1.0	3x1.0	6	7.0	1100		
040610-03x1.5	3x1.5	5	8.5	1400		

## Cable Reel 040620 (Standard) and 040621 (with Nozzle)



Standard type



Type with nozzle

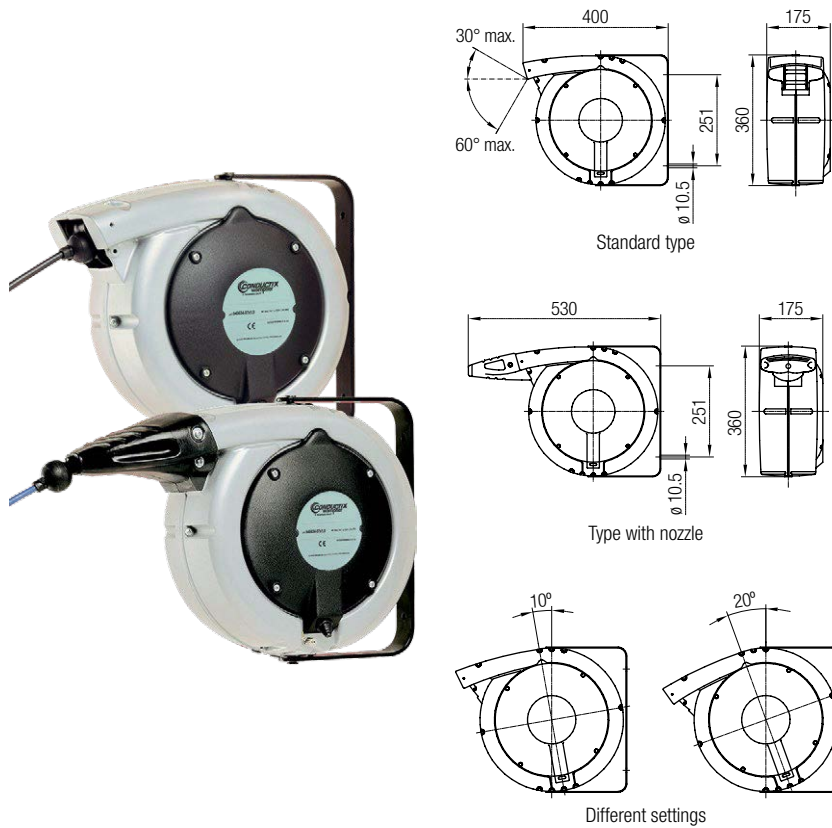
### Technical details

- Case: plastic
- Mounting bracket: wall and ceiling attachment
- Protection type:
  - IP 42 (standard);
  - IIP 43 (with nozzle)
- Voltage: max. 500V
- Cable:
  - 1 pole, H05V-F
  - 2-8 pole, H05VV-F CEI 20-35
- Installed protection device against overheating on the 2+3-pole reels
- Manufactured according to EN 61242 and EN 60335-1
- Cable outside reel 1.5 m
- Backstop with toothed locking device
- Operating temperature: -5°C to +40°C
- Double earth connection

Order No. Standard	Order No. with Nozzle	No. of Cores + Cross Section [mm <sup>2</sup> ]	Coiled Length [m]	Cable Outer- $\phi$ [mm]	Cable Wound up [W/A]	Voltage [V]	Weight [kg]
040620-01x2.5	040621-01x2.5	1x2.5	15.0	5.5	-	230	4.0
040620-01x6.0	040621-01x6.0	1x6.0	12.5	5.5			
040620-01x16.0	040621-01x16.0	1x16	8.5	8.0			
040620-02x1.0	040621-02x1.0	2x1.0	14.0	6.5	900W		
040620-02x1.5	040621-02x1.5	2x1.5	11.0	7.5	1100W		
040620-02x2.5	040621-02x2.5	2x2.5	8.5	9.5	1750W		
040620-03x1.0	040621-03x1.0	3x1.0	12.5	7.0	900W		
040620-03x1.5	040621-03x1.5	3x1.5	10.0	8.5	1200W		
040620-03x2.5	040621-03x2.5	3x2.5	7.0	10.0	1850W		
040620-04x1.0	040621-04x1.0	4x1.0	10.5	8.0	1100W		
040620-04x1.5	040621-04x1.5	4x1.5	8.0	9.5	1350W		
040620-04x2.5	040621-04x2.5	4x2.5	5.5	11.0	2000W		
040620-05x1.0	040621-05x1.0	5x1.0	7.5	9.0	1000W		
040620-05x1.5	040621-05x1.5	5x1.5	5.5	10.5	1350W	-	
040620-07x1.0	040621-07x1.0	7x1.0	6.0	10.0	3.0A		
040620-07x1.5	040621-07x1.5	7x1.5	5.5	12.0	4.5A		
040620-08x1.0	040621-08x1.0	8x1.0	5.5	11.0	3.0A		

# Spring Operated Cable Reels

## Cable Reel 040630 (Standard) and 040634 (with Nozzle)



### Technical details

- Case: aluminum
- Protection type:
  - IP 42 (standard)
  - IP 43 (with nozzle)
- Voltage: max. 500V
- Cable: H05VV-F
- Manufactured according to EN 61242 and EN 60335-1
- Cable outside reel 2 m
- With locking device
- Operating temperature: -5°C to +40°C
- Double earth connection

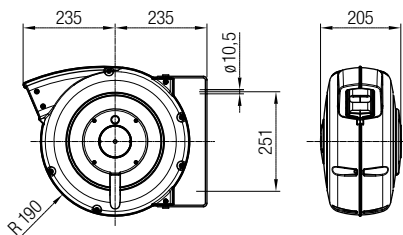
### Note

- The cable reels shall be considered as part of a complex unit/system.
- Prior to commissioning the cable reel must be provided with an appropriate safety device or automatic circuit breaker, taking the operation "reel wound up" (see type plate or table) as a base for the layout of the safety elements.

Order No. Standard	Order No. with Nozzle	No. of Cores + Cross Section [mm <sup>2</sup> ]	Coiled Length [m]	Cable Outer- $\phi$ [mm]	Cable Wound up [W/A]	Voltage [V]	Weight [kg]
040630-03x1.5	040634-03x1.5	3x1.5	24	8.5	1100W	230	14.0
040630-03x2.5	040634-03x2.5	3x2.5	15	10.0	2000W		
040630-04x1.0	040634-04x1.0	4x1.0	24	8.0	0800W		
040630-04x1.5	040634-04x1.5	4x1.5	21	9.5	1100W	400	
040630-04x2.5	040634-04x2.5	4x2.5	15	11.0	2000W		
040630-04x4.0	040634-04x4.0	4x4.0	8	14.0	3000W		
040630-05x1.0	040634-05x1.0	5x1.0	16	9.0	0800W		
040630-05x1.5	040634-05x1.5	5x1.5	15	10.5	1500W		
040630-05x2.5	040634-05x2.5	5x2.5	10	12.5	2000W		
040630-07x1.0	040634-07x1.0	7x1.0	16	10.0	3.0A		
040630-07x1.5	040634-07x1.5	7x1.5	9	12.0	4.5A		
040630-08x1.0	040634-08x1.0	8x1.0	11	11.0	3.0A		
040630-08x1.5	040634-08x1.5	8x1.5	8	13.0	4.5A		
040630-08x2.5	040634-08x2.5	8x2.5	6	15.0	7.5A		
040630-10x1.0	040634-10x1.0	10x1.0	8	13.0	3.0A		
040630-10x1.5	040634-10x1.5	10x1.5	6	15.0	4.5A		
040630-12x1.0	040634-12x1.0	12x1.0	10	13.5	3.0A		
040630-12x1.5	040634-12x1.5	12x1.5	6	15.5	4.5A		
040630-16x1.0	040634-16x1.0	16x1.0	6	15.0	3.0A		

# Spring Operated Cable Reels

## Cable Reel 040635



### Technical details

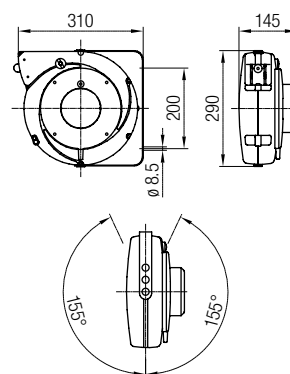
- Case: plastic
- Swiveling bracket
- Roller cable guide aperture
- Clamping bar on supply side
- Protection type: IP 42
- Voltage: max. 500V
- Cable:
  - 1 pole H05V-F
  - 2-5 pole H05VV-F
- Manufactured according to EN 61242 and EN 60335-1
- Operating temperature: -5°C to +40°C
- Cable outside reel 2 m
- Backstop with toothed locking device
- Double earth connection

### Note

- The cable reels shall be considered as part of a complex unit/system.
- Prior to commissioning the cable reel must be provided with an appropriate safety device or automatic circuit breaker, taking the operation "reel wound up" (see type plate or table) as a base for the layout of the safety elements.

Order No. Standard	No. of Cores + Cross Section [mm <sup>2</sup> ]	Coiled Length [m]	Cable Outer- $\phi$ [mm]	Cable Wound up [W]	Voltage [V]	Weight [kg]
040635-01x16.0	1 x 16	20	8.0	-	-	9.0
040635-02x1.5	2 x 1.5	25	7.5	1100	230	
040635-03x1.5	3 x 1.5	25	8.5	1100		
040635-03x2.5	3 x 2.5	20	10.0	2000	400	
040635-04x1.5	4 x 1.5	25	9.5	1100		
040635-04x2.5	4 x 2.5	18	11.0	2000		
040635-05x1.5	5 x 1.5	20	10.5	1500		
040635-05x2.5	5 x 2.5	15	12.5	2000		

## Barrier Rope Reel 040711-1



### Order No. 040711-1

### Technical details

- Case: plastic
- Mounting bracket: wall fixing
- With blocking device
- Striped rope 4 cm wide

- Rope length: 16 m
- Weight: 2.5 kg
- Application: temporary blockade at danger areas, such as mines

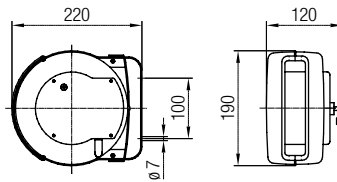






# Spring Operated Hose Reels

## Hose Reel 040410

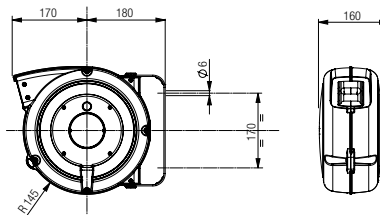


### Technical details

- Case: plastic
- Mounting bracket: wall and ceiling fixing
- Ratchet lock, every 0.5 m
- Hose: polyurethan
- Entry connection for hose internal diameter: 6 mm
- External hose: 1 m
- Operating temperature: +5°C to +40°C
- Application: for industry and DIY
- Medium: air and cold water

Order No.	Hose-ID [mm]	Coiled Length [m]	Fitting Hose Outlet Male	Pressure [bar]	Weight [kg]
040410-06x5.5	6	5.5	1/4"	12	2.3

## Hose Reel 040423

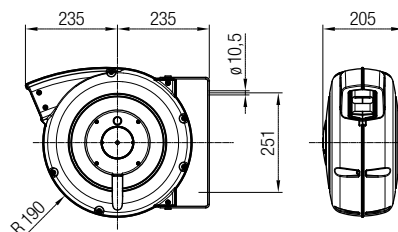


### Technical details

- Case: plastic
- Mounting bracket: swivelling plastic bracket
- Easy to switch of ratchet, stop every 0.5m
- Hose: polyurethane shining
- External hose: 1 m
- Connecting hose: 1.5 m
- Operating temperature: +5°C to +40°C
- Medium: air and cold water

Order No.	Hose-ID [mm]	Coiled Length [m]	Fitting Inlet/ Outlet Male	Pressure [bar]	Weight [kg]
040423-08x9	8	9	1/4"	15	4.0

## Hose Reel 040438



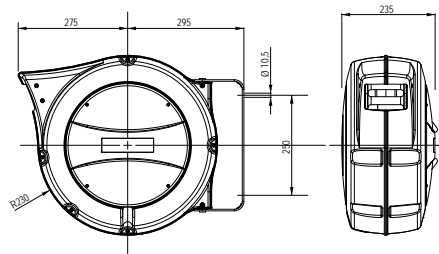
### Technical details

- Case: impact resistant plastic
- Support: swivelling metal bracket
- Automatic lock for hose locking device at the desired length
- Hose: polyurethane shining
- External hose: 1 m
- Connecting hose: 1.5 m (without fitting)
- Operating temperature: +5°C to +40°C
- Medium: air and cold water

Order No.	Hose-ID [mm]	Coiled Length [m]	Fitting Outlet Male	Pressure [bar]	Weight [kg]
040438-08x15	8	15	1/4"	15	7.0
040438-10x15	10		3/8"		

# Spring Operated Hose Reels

## Hose Reel 040431

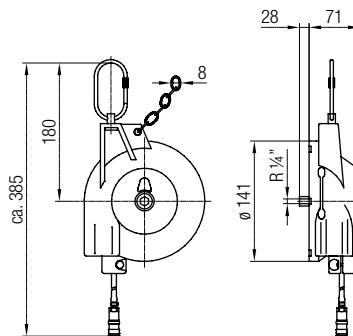


### Technical details

- Case: Technopolymer
- Hose: KPU
- Mounting bracket: swivelling plastic bracket
- Locking device, easy switch off
- Connecting hose: 1,5 m
- Operating temperature: 5°C to +50°C
- Medium: air and cold water

Order No.	Hose-ID [mm]	Coiled Length [m]	Fitting Outlet Male	Pressure [bar]	Weight [kg]
040431-10x24-02	10	24	3/8"	15	10
040431-13x15-02	12,5	15	1/2"		

## Hose Balancer 040409



### Technical details

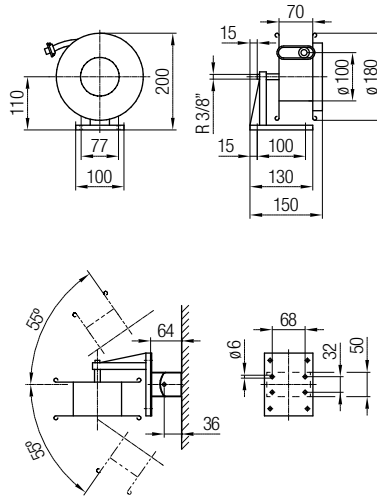
- Case: impact and abrasion resistant plastic
- Case cover: lacquered steel
- Rope reel: wear resistant plastic
- Suspension: rotating screw snap hook
- Riveted special bearing spring
- Air hose: wear resistant to attach the load
- Operating pressure: 10 bar
- Air flow rate: with 6 bar approx. 900 l/min
- With safety chain
- Operating temperature: +5°C to +40°C

Order No.	Medium	Load Capacity [daN]	Hose-ID [mm]	Length [m]	Pressure [bar]	Weight [kg]
040409-1	Compressed air	0.4 - 1.2	5	0,8	10	1.2
040409-2		1.2 - 2.2				1.3
040409-3		2.2 - 3.0				1.4



# Spring Operated Hose Reels

## Hose Reel 040449



### Technical details

- Open reel: varnished steel
- Mounting bracket: for wall fixing
- Interior disengageable locking device;
- 16 engaging possibilities per revolution
- Ball bearing
- Hose: rubber; oil and fuel resistant
- Swiveling hose guide arm
- Adjustable rubber end stop
- Connecting hose: approx. 0.75 m, hose connection at the coiled hose end
- Operating pressure: up to 20 bar
- Operating temperature: -20°C to +60°C
- Spring tension when pulled out:
  - approx. 2.5 kg initial
  - approx. 8 kg final
- Medium: air

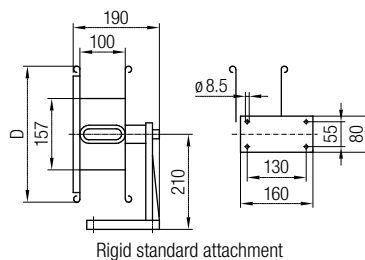
Order No.	Hose ID [mm]	Coiled Length [m]	Fitting		Pressure [bar]	Weight [kg]
			Inlet Female	Hose Outlet Male		
040449-06x5,0	6	5	3/8"	1/4"	20	3.5
040449-09x3,0	9	3	3/8"	3/8"		

## Accessories for Hose Reel 040449

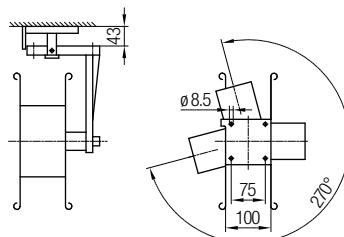
Order No.	Description	Weight [kg]
040449-10	Plate for wall mounting 110° rotation	6
040449-11	Plate for ceiling mounting 270° rotation	

# Spring Operated Hose Reels

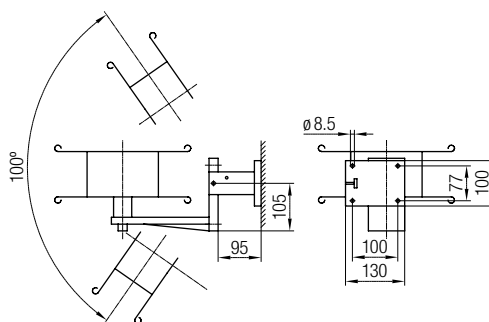
## Hose Reel 040450



Rigid standard attachment



Rotating ceiling attachment



Swiveling wall attachment

### Technical details

- Open reel: varnished steel
- Mounting bracket: for wall, ceiling and ground fixing
- Wall bracket 110° rotation
- Ceiling bracket 270° rotation
- Interior disengageable locking device; 16 engaging possibilities per revolution
- Ball bearing
- Hose: rubber; oil and fuel resistant
- Swiveling hose guide arm
- Adjustable rubber end stop
- Connecting hose: approx. 0.75 m, hose connection at the coiled hose end
- Spring tension when pulled out:
  - approx. 3 kg at the beginning
  - approx. 7 to 12 kg at the end
- Medium air: -20°C to +60°C
- Medium water: up to +40°C

Order No.	Hose ID [mm]	Coiled Length [m]	Fitting		D [mm]	Pressure [bar]	Weight [kg]
			Inlet Female	Hose Outlet Male			
040450-06x12	6	12	3/8"	1/4"	300	20	8.5
040450-06x15		15			340		10.5
040450-06x20		20			340		11.5
040450-09x8	9	8		3/8"	300		7.5
040450-09x12		12			340		11.0
040450-09x15		15			340		11.0

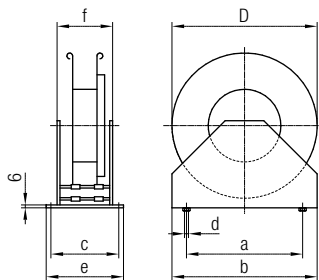
### Accessories for Hose Reel 040450

Order No.	Description	Weight [kg]
040450-10	Plate for wall mounting 110° rotation	1
040450-11	Plate for ceiling mounting 270° rotation	



# Spring Operated Hose Reels

## Hose Reel 040460

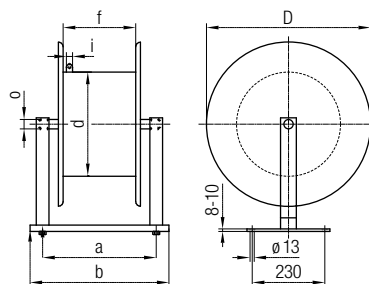


### Technical details

- Open reel: varnished steel
- Mounting bracket: rigid for wall, ceiling or ground fixing
- 1 or 2 x per revolution; with external tension relief
- Ball bearing
- Hose: PVC, oil and fuel resistant
- Adjustable rubber stop
- Operating pressure: up to 20 bar
- Operating temperature: -20°C to +60°C
- Spring tension when pulled out:
  - approx. 3 kg initial
  - approx. 7 to 12 kg final
- Medium: air

Order No.	Hose ID [mm]	Coiled Length [m]	Fitting		Dimensions							Weight [kg]	
			Inlet Male	Hose Outlet Male	D [mm]	a [mm]	b [mm]	c [mm]	d [mm]	e [mm]	f [mm]		
040460-06x12	6	12	3/8"	1/4"	340	280	340	140	8.5	160	115	10.0	
040460-06x20		20			400	310	400	160	11.0	190	140	16.5	
040460-09x8	9	8		3/8"	3/8"	340	280	340	140	8.5	160	115	9.0
040460-09x12		12				400	310	400	160	11.0	190	140	14.5
040460-09x20		20				450	375	465	160	11.0	190	150	20.0

## Hose Reel 040483



### Technical details

- Open reel: varnished steel
- Mounting bracket: wall, ceiling or ground fixing
- 2 x per revolution; with external tension relief
- Operating pressure: up to 30 bar
- Operating temperature: -20°C to +100°C
- Medium: compressed air, water, oil

Order No. with Hose	Hose ID [mm]	Coiled Length [m]	Fitting		D [mm]	d [mm]	Dimensions			Weight [kg]
			Inlet Female	Hose Outlet Female			a [mm]	b [mm]	f [mm]	
040483-19x20	19	20	1"	3/4"	550	330	360	440	230	58
040483-19x30		30			620		360	440	230	75
040483-25x20	25	20		1"	1"		620	360	440	230
040483-25x30		30	530					600	390	100

Order No. without Hose	Hose ID [mm]	Coiled Length [m]	Fitting		D [mm]	d [mm]	Dimensions			Weight [kg]
			Inlet Female	Hose Outlet Female			a [mm]	b [mm]	f [mm]	
040480-19x20	19	20	1"	3/4"	550	330	360	440	230	44
040480-19x30		30			620		360	440	230	50
040480-25x20	25	20		1"	1"		620	360	440	230
040480-25x30		30	530					600	390	70



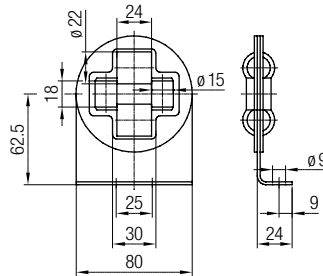
F.I.L 06

KIA



# Accessories for Cable and Hose Reels

## Roller Guide 4-fold on angle

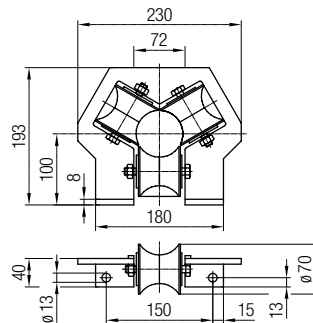


Order No. 040490-01

### Technical details

- Case: galvanised steel
- Rollers: plastic
- Weight: 0.3 kg
- Operating temperature: -40°C to +60°C
- $\varnothing$  max. 18 mm

## Roller Guide 3-fold to open



Order No. 040491-04

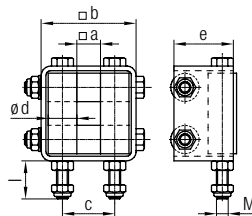
### Technical details

- Case: galvanised steel
- Rollers: plastic; sealed ball bearings
- Weight: 2.3 kg
- Operating temperature: -40°C to +60°C
- $\varnothing$  max. 72 mm

### Special feature

The lower roller can be removed to install the cable.

## Roller Guide 4-fold in the casing



### Technical details

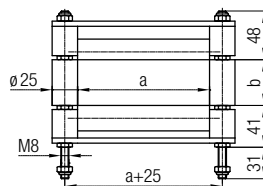
- Case: galvanised steel
- Rollers: plastic
- Screws: galvanised steel
- Operating temperature: -40°C to +60°C

### Special feature

- Overall guidance without air gap,
- Small construction

Order No.	a [mm]	b [mm]	c [mm]	d [mm]	e [mm]	l [mm]	M [mm]	Weight [kg]
040490-03	10	40	22	12	25	15	5	0.1
040490-04	20	50	32	12	25	15	5	0.2
040490-05	32	70	47	15	29	20	6	0.2

## Roller Guide 4-fold



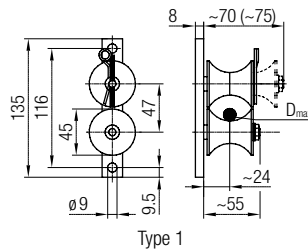
### Technical details

- Brackets and screws: galvanised steel
- Rollers and end pieces: plastic to +60°C
- Dimension "a" and "b" can be adjusted to your requirements

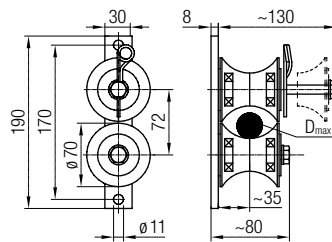
Order No.	a [mm]	b [mm]	Weight [kg]
040490-06	130	45	0.7
040490-07	220	45	1.0
040490-08	60	60	0.3

# Accessories for Cable and Hose Reels

## Roller Guide 2-fold to open



Type 1



Type 2

### Technical details

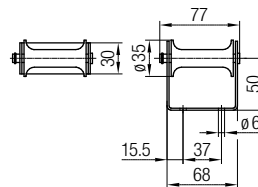
- Holder: galvanised steel
- Rollers: plastic
- Operating temperature: -40°C to +60°C

### Special features

- Open roller guide
- Easy cable fitting without tool

Order No.	D [mm]	Type	Weight [kg]
040491-01	12	1	0.3
040491-03	28	2	0.8

## Cable Supporting Roller

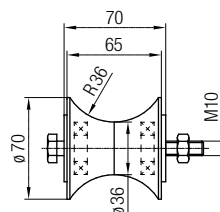


### Order No. 040492-03

### Technical details

- Bracket: galvanised steel
- Roller: plastic
- Used for light cables of up to  $\varnothing 14$  mm
- Weight: 0.1 kg
- Operating temperature: -40°C to +60°C

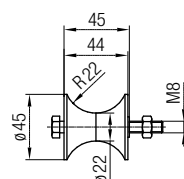
## Single Rollers



### Order No. 040492-01

### Technical details

- Roller: plastic (macrolon)
- With complete bearing and bolt M 10x100; DIN 931
- Weight: 0.3 kg
- Operating temperature: -40°C to +60°C



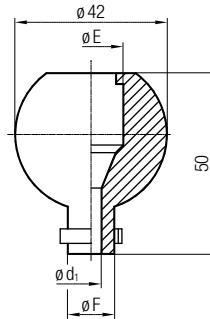
### Order No. 040492-02

### Technical details

- Roller: plastic (macrolon)
- With distance washer and bolt M 8x70; DIN 931
- Weight: 0.1 kg
- Operating temperature: -40°C to +60°C

# Accessories for Cable and Hose Reels

## Round Rubber End Stop Type A

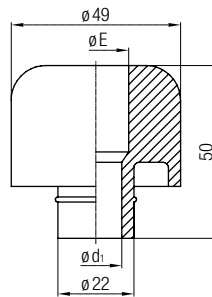


### Technical details

- As position limitation e.g. for a certain suspension length. The fixed length will remain outside the reel.
- As limit buffer and damping device. Just connect the buffer with the desired press capacity to the cable. The buffer slides on the cable and prevents the control station from damages.
- The drilling can be slightly opened

Order No.	Cable and Rope- $\phi$ [mm]	$\phi E$ [mm]	$\phi d_1$ [mm]	$\phi F$ [mm]	Weight [kg]
040495-06	4 - 6	18	6	13	0.1
040495-08	6 - 8	20	8	16	

## Round Rubber End Stop Type B

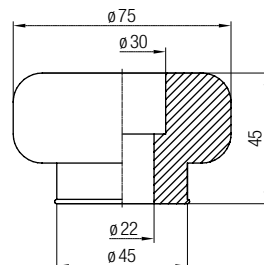


### Technical details

- As position limitation e.g. for a certain suspension length. The fixed length will remain outside the reel.
- As limit buffer and damping device. Just connect the buffer with the desired press capacity to the cable and prevents the control station from damages.
- The drilling can be slightly opened

Order No.	Cable and Rope- $\phi$	$\phi E$ [mm]	$\phi d_1$ [mm]	Weight [kg]
040495-14	10 - 14	14	14	0.1
040495-15	12 - 15	19	15	

## Round Rubber End Stop Type C



### Technical details

- As position limitation e.g. for a certain suspension length. The fixed length will remain outside the reel.
- As limit buffer and damping device. Just connect the buffer with the desired press capacity to the cable. The buffer slides on the cable and prevents the control station from damages.
- The drilling can be slightly opened
- Type C provided with a clamping piece

Order No.	Cable and Rope- $\phi$ [mm]	Weight [kg]
040495-17	13 - 22	0.1

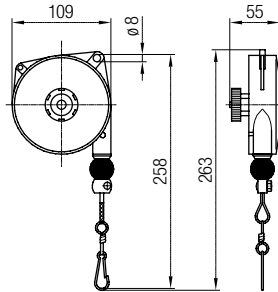






# Retractors without Blocking Device

## Retractor (040871) Load Capacity 0.4 to 3 kg

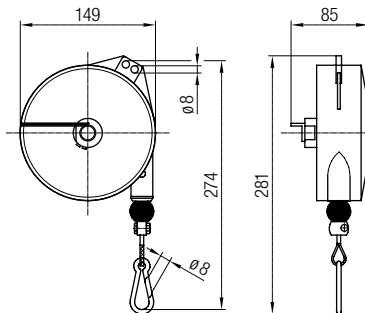


### Technical details

- Case: die cast aluminum
- Rope: stainless steel wire,  $\varnothing$  2 mm
- Frictionless rope guide
- Adjustable lifting stop
- Additional safety suspension
- Polyamides rope thimble

Order No.	Load Capacity [kg]	Cable Travel [m]	Weight [kg]
040871-01x1.6	0.4 - 1	1.6	0.6
040871-02x1.6	1 - 2		0.6
040871-03x1.6	2 - 3		0.7

## Retractor (040871) Load Capacity 2 to 8 kg

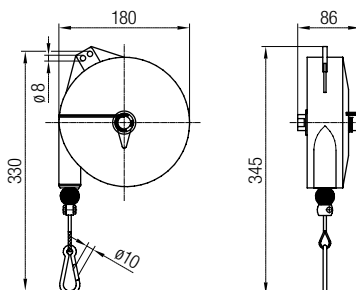


### Technical details

- Case: die cast aluminum
- Rope: stainless steel wire,  $\varnothing$  2 mm
- Frictionless rope guide
- Adjustable lifting stop
- Additional safety suspension
- Fail safe spring mechanism
- Polyamides rope thimble

Order No.	Load Capacity [kg]	Cable Travel [m]	Weight [kg]
040871-04x2.0	2 - 4	2.0	2.0
040871-06x2.0	4 - 6		2.3
040871-08x2.0	6 - 8		2.5

## Retractor (040871) Load Capacity 2 to 14 kg



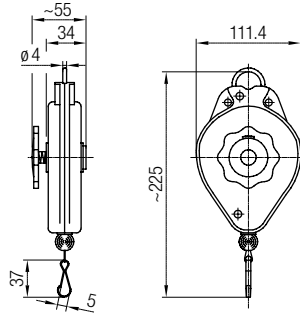
### Technical details

- Case: die cast aluminum
- Rope: stainless steel wire,  $\varnothing$  2.5 mm
- Frictionless rope guide
- Adjustable lifting stop
- Additional safety suspension
- Fail safe spring mechanism
- Polyamides rope thimble

Order No.	Load Capacity [kg]	Cable Travel [m]	Weight [kg]
040871-04x2.5	2 - 4	2.5	2.9
040871-06x2.5	4 - 6		3.2
040871-08x2.5	6 - 8		3.5
040871-10x2.5	8 - 10		3.7
040871-12x2.5	10 - 14		4.0

# Retractors without Blocking Device

## Retractor (040804) Load Capacity 0.5 to 2 kg

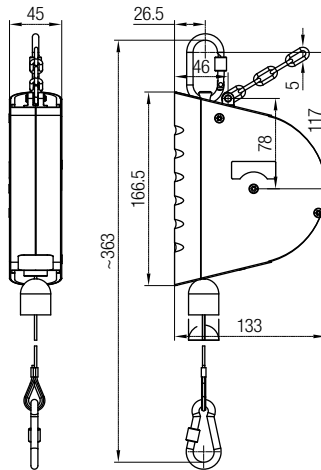


### Technical details

- Case: wear resistant plastic
- Rope:  $\varnothing$  2 mm, plastic
- Easy load setting
- Spring in riveted design

Order No.	Load Capacity [kg]	Cable Travel [m]	Weight [kg]
040804-1.2x2.0	0.5 - 1.2	2.0	0.5
040804-2.0x2.0	1.0 - 2.0		

## Retractor (040814) Load Capacity 0.5 to 3 kg

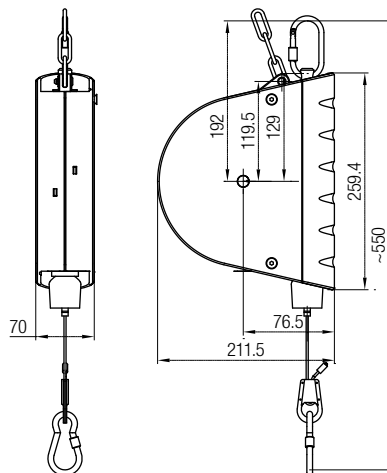


### Technical details

- Case: impact- and abrasion resistant plastic
- Cable drum: abrasion resistant plastic
- Cable: high-strength galvanised steel cable,  $\varnothing$  2 mm, with elastic cable stop buffer and spring hook for load suspension
- Suspension: rotating safety hook
- Spring: High-strength special suspension spring in riveted design, easy load setting

Order No.	Load Capacity [kg]	Cable Travel [m]	Weight [kg]
040814-02x2.5	0.5 - 2	2.5	0.8
040814-03x2.5	1.5 - 3		

## Retractor (040824) Load Capacity 2 to 14 kg



### Technical details

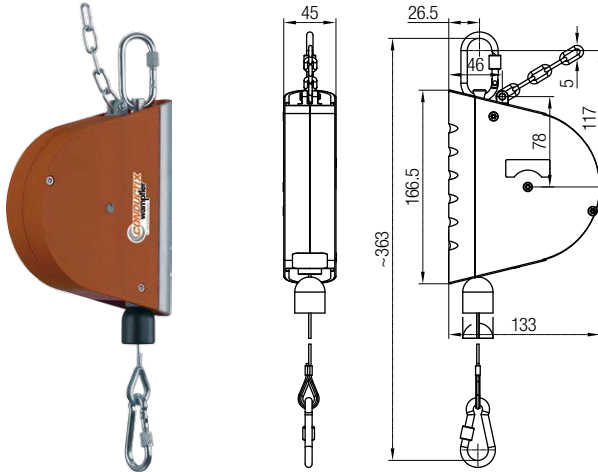
- Case: impact- and abrasion resistant plastic
- Cable drum: abrasion resistant plastic
- Cable: high-strength galvanised steel cable,  $\varnothing$  2 mm, with elastic cable stop buffer and screw-type spring hook for load suspension
- Suspension: rotating safety hook
- Spring: High-strength, banded special suspension spring load continuously adjustable

Order No.	Load Capacity [kg]	Cable Travel [m]	Weight [kg]
040824-05x3.0	2 - 5	3.0	3.3
040824-08x3.0	4 - 8		3.7
040824-10x3.0	7 - 10		3.7
040824-14x3.0	10 - 14		3.9



# Retractors with Blocking Device

## Retractor (040813) Load Capacity 0.5 to 3 kg

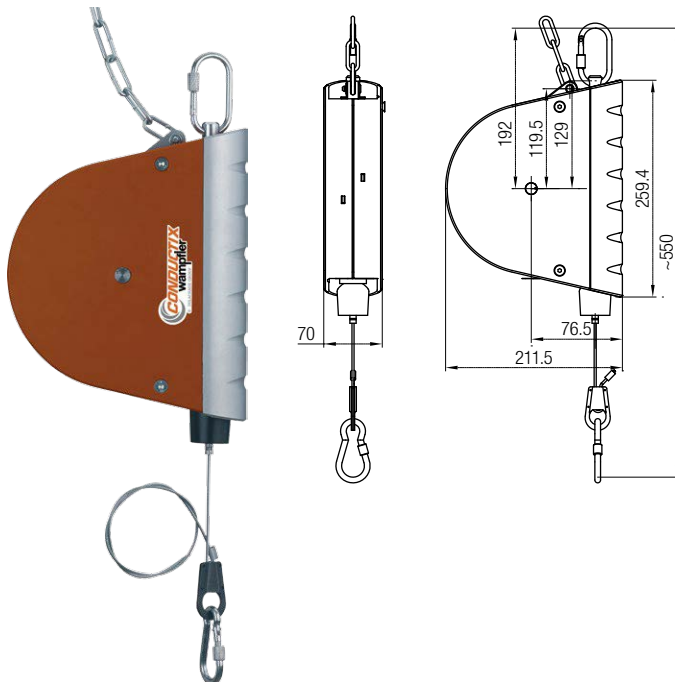


### Technical details

- Case: impact- and abrasion resistant plastic
- Cable drum: abrasion resistant plastic
- Cable: high-strength galvanised steel cable,  $\varnothing$  2 mm, with elastic cable stop buffer and spring hook for load suspension
- Suspension: rotating safety hook
- Spring: High-strength special suspension spring in riveted design, easy load setting

Order No.	Load Capacity [kg]	Cable Travel [m]	Weight [kg]
040813-02x2.5	0.5 - 2	2.5	0.9
040813-03x2.5	1.5 - 3		

## Retractor (040823) Load Capacity 2 to 14 kg



### Technical details

- Case: impact- and abrasion resistant plastic
- Cable drum: abrasion resistant plastic
- Cable: high-strength galvanised steel cable,  $\varnothing$  2 mm, with elastic cable stop buffer and screw-type spring hook for load suspension
- Suspension: rotating safety hook
- Spring: High-strength, banded special suspension, spring load continuously adjustable

Order No.	Load Capacity [kg]	Cable Travel [m]	Weight [kg]
040823-05x3.0	2 - 5	3.0	3.5
040823-08x3.0	4 - 8		3.8
040823-10x3.0	7 - 10		3.8
040823-14x3.0	10 - 14		4.0

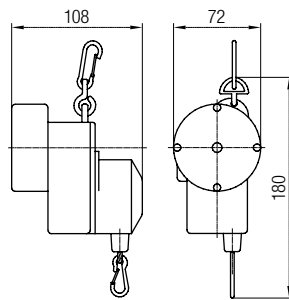






# Balancers with Perfect Balance

## Balancer (040836) Load Capacity 0.7 to 2.0 kg



### Technical details

- Case: plastic
- Reel: plastic
- Rope: plastic,  $\varnothing$  2 mm
- Spring safety hook
- With locking device

### Note

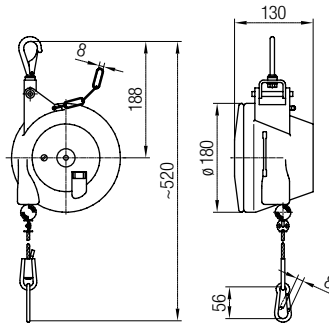
On balancers adjusted load is balanced over the complete pull-out length!

Order No.	Load Capacity [kg]	Cable Travel [m]	Weight [kg]
040836-02.0x1.5	0.7 - 1.3	1.7	0.5
040836-02.5x1.5	1.0 - 2.0		



# Balancers with Optimum Balance of Weight

## Balancer with Blocking Device (040832) Load Capacity 4.5 to 17 kg



### Technical details

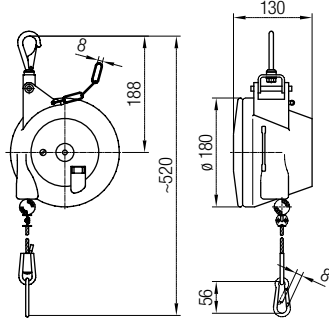
- Case: abrasion resistant and high-strength plastic
- Rope reel: wear resistant plastic
- Integrated locking device for blocking the rope reel
- Suspension: rotating and swiveling safety hook
- Riveted special bearing spring
- Steel rope:  $\varnothing 5$  mm, galvanised, with elastic rope retracting limitation and screw snap hook to attach the load
- Load setting: stepless via positioning screw
- Rope turnbuckle for stepless rope length setting
- With safety chain and spring breakage safety device

### Note

On balancers adjusted load is balanced in the adjusted working height!

Order No.	Load Capacity [kg]	Cable Travel [m]	Weight [kg]
040832-07x2.0	4.5 - 7.0	2.0	3.3
040832-10x2.0	6.0 - 10.0		3.4
040832-14x2.0	9.0 - 14.0		3.6
040832-17x2.0	13.0 - 17.0		3.8

## Balancer without Blocking Device (040831) Load Capacity 3 to 17 kg



### Technical details

- Case: abrasion resistant and high-strength plastic
- Suspension: rotating and swiveling safety hook
- Riveted special bearing spring
- Steel rope:  $\varnothing 5$  mm, galvanised, with elastic rope retracting limitation and screw snap hook to attach the load
- Load setting: stepless via positioning screw
- Rope turnbuckle for stepless rope length setting
- With safety chain and spring breakage safety device

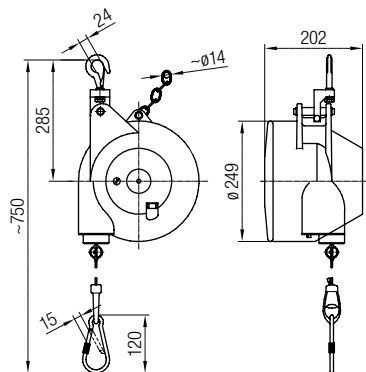
### Note

On balancers adjusted load is balanced in the adjusted working height!

Order No.	Load Capacity [kg]	Cable Travel [m]	Weight [kg]
040831-005x2.0	3.0 - 5.0	2.0	2.9
040831-007x2.0	4.5 - 7.0		3.1
040831-010x2.0	6.0 - 10.0		3.2
040831-014x2.0	9.0 - 14.0		3.4
040831-017x2.0	13.0 - 17.0		3.6

# Balancers with Optimum Balance of Weight

## Balancer without Blocking Device (040831) Load Capacity 12 to 90 kg



### Technical details

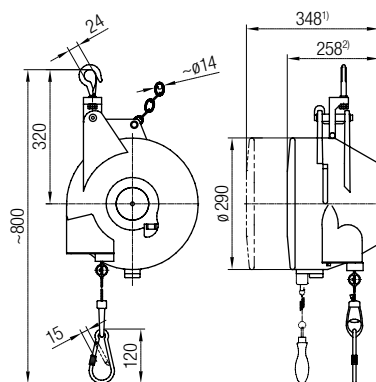
- Case: high-strength aluminum sand casting
- Suspension: rotating and swiveling high security hook
- Fully locked special bearing spring with spring breakage safety device
- Steel rope:  $\varnothing 5$  mm, galvanised, with elastic rope retracting limitation and screw snap hook to attach the load
- Load setting: stepless via positioning screw
- With safety expansion chain

### Note

On balancers adjusted load is balanced in the adjusted working height!

Order No.	Load Capacity [kg]	Cable Travel [m]	Weight [kg]
040831-020x2.0	12 - 20	2.0	14.8
040831-030x2.0	20 - 30		15.2
040831-045x2.0	30 - 45		16.9
040831-060x2.0	45 - 60		17.3
040831-075x2.0	60 - 75		18.7
040831-090x2.0	75 - 90		19.7

## Balancer with Blocking Device (040831) Load Capacity 15 to 150 kg



### Technical details

- Case: high-strength aluminum sand casting
- Integrated locking device for blocking the rope reel
- Suspension: rotating and swiveling high security hook
- Fully locked special bearing spring with spring breakage safety device
- Steel rope:  $\varnothing 5$  mm, galvanised, with elastic rope retracting limitation and screw snap hook to attach the load
- Load setting: stepless via positioning screw
- With safety expansion chain

### Note

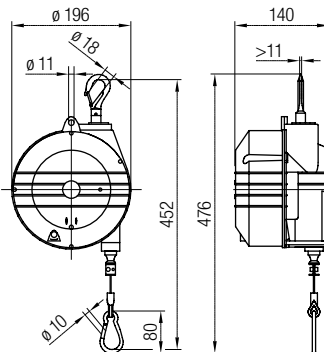
On balancers adjusted load is balanced in the adjusted working height!

- 1) at Weight >100 kg  
2) at Weight <100 kg

Order No.	Load Capacity [kg]	Cable Travel [m]	Weight [kg]
040831-025x3.0	15 - 25	3.0	25
040831-035x3.0	25 - 35		26
040831-050x3.0	35 - 50		27
040831-065x3.0	50 - 65		28
040831-080x3.0	65 - 80		29
040831-090x3.0	80 - 90		30
040831-100x3.0	90 - 100		32
040831-115x3.0	100 - 115		42
040831-130x3.0	115 - 130		44
040831-140x3.0	130 - 140		46
040831-150x3.0	140 - 150		48

# Balancers with Optimum Balance of Weight

## Balancer without Blocking Device (040874) Load Capacity 10 to 25 kg



### Technical details

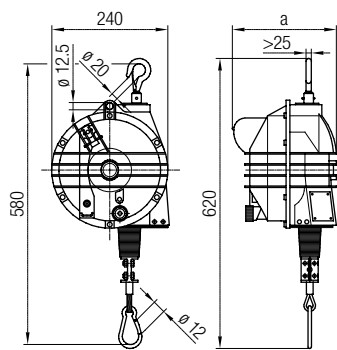
- Sturdy aluminum case
- Rope: stainless steel wire,  $\varnothing$  2.5 mm
- Rope guide: low friction
- Conical reel body with ball bearing
- Fine adjustment in the lifting area with continuous load adjustment
- Suspension: Rotating safety hook
- Blocking device (to fix or release the load at the requested height)
- Auxiliary safety suspension
- Fail safe spring mechanism
- Polyamides rope thimble

### Note

On balancers adjusted load is balanced in the adjusted working height!

Order No.	Load Capacity [kg]	Cable Travel [m]	Weight [kg]
040874-014x2.0	10 - 14	2.0	5.5
040874-018x2.0	14 - 18		6.0
040874-022x2.0	18 - 22		6.5
040874-025x2.0	22 - 25		6.5

## Balancer without Blocking Device (040873) Load Capacity 10 to 105 kg



### Technical details

- Sturdy aluminum case
- Rope: stainless steel wire,  $\varnothing$  4 mm
- Rope guide: low friction
- Conical reel body with ball bearing
- Fine adjustment in the lifting area with continuous load adjustment
- Suspension: Rotating safety hook
- Blocking device (to fix or release the load at the requested height)
- Auxiliary safety suspension
- Fail safe spring mechanism
- Polyamides rope thimble
- Option: Release chain (see page 27)

### Note

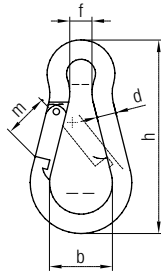
On balancers adjusted load is balanced in the adjusted working height!

Order No.	Load Capacity [kg]	Cable Travel [m]	a [m]	Weight [kg]
040873-015x2.0	10 - 15	2.0	215	10.3
040873-020x2.0	15 - 20			10.6
040873-025x2.0	20 - 25			11.2
040873-030x2.0	25 - 30			11.5
040873-035x2.0	30 - 35			11.8
040873-045x2.0	35 - 45			12.4
040873-055x2.0	45 - 55			12.5
040873-065x2.0	55 - 65			13.6
040873-075x2.0	65 - 75	2.0	250	14.5
040873-090x2.0	75 - 90			17.3
040873-105x2.0	90 - 105			18.0



# Accessories for Balancer

## Spring safety hook



### Technical details

- The snap hook is for the fixation of balancers and their load
- Material: galvanised steel

Order No.	d [mm]	h [mm]	f [mm]	b [mm]	m [mm]	Load Capacity [kg]	Weight [kg]
040010-40x4	4	40	4	12	8	100	0.1
040010-53x6	6	60	5	16	8	120	
040010-90x9	9	60	9	25	10	250	

## Safety Chain



Order No. 040499

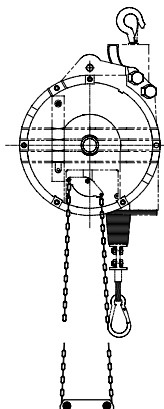
### Technical details

- Length: 200 mm
- Load capacity: 100 kg
- Weight: 0.3 kg
- Material: galvanised steel

### Note

The safety chain serves as protection against falling down.

## Release Chain (040830-5)



Order No. 040830-5

### Technical details

- Length: 800 mm
- Weight: 0.2 kg
- Release chain: galvanised steel
- Handle: plastic
- Application for balancer 040873

### Note

The release chain is mounted to the blocking device of the balancer. This device serves to lock and release the load at the required height.

# Application Directives Information

---

## Cable and Hose Reels

---

All the models are suitable for automatic or hand operation. Varied attachment possibilities allow an installation under nearly all operation conditions.

The cases are made up of simultaneous impact resistant and insulating material, through the use of PVC plastic cables constant against ozone, UV rays, oils, etc.

- In the cable inlet, each hose reel disposes of a mouth piece and a stop device with a gear segment return stop for distance of approx. 0.5 m (refer to the corresponding operation instruction).
- The return stop can be easily and quickly activated respectively deactivated. The handle height of the cable can be individually adjusted by means of a rubber stop.
- Prior to commissioning the cable reel must be protected with an appropriate safety device or with a safety automate, whereas the situation „reel wound up“ (see identification plate or table) must be taken as a basis for the determination of the safety element.

---

## Balancer

---

Required for the selection of a balancer:

- Choose the size of the balancer with regard to the total weight to be suspended (tool plus accessories) and to the requested hoist.
- Try to use the upper zone of the balancer's load capacity data if possible.

Installation of the balancer:

- For safety reasons always use a 2nd load stop device, to prevent the load from falling down.
- The balancer has been arranged for vertical operation. A non-vertical hoist will produce permanent abrasion. We therefore recommend to use cable trolleys running within a track system, to guarantee a vertical pull. Please consider the Conductix-Wampfler catalogue "tasksaver systems No. 401".
- If several balances are operated very close to each other, suspend them at different heights to prevent collisions.
- The spring tension is adjusted to the max load area.  
To release the initial tension turn the screw counterclockwise. To tension the spring turn the screw clockwise.  
To release the spring turn counterclockwise.

---

## Warning

---

- It is not allowed to lift and transport people with the products listed in the catalogue.
- Check the prescribed requirements and laws.
- Make sure that the equipment and load carrying devices, on which the hoist units will be suspended, are sufficiently dimensioned and provide the necessary stability for the hoist inclusively hanging charge.
- Read all operating instructions and warnings carefully.
- Do not overload the hoist unit.
- All operators working on cranes and hoist units as well as assisting persons have to be introduced into their work. load is forbidden.
- Standing under the pending load is forbidden.
- Attention when adjusting the balancer.

---

## Information

---

We reserve the right to carry out modifications to the product in the course of technical development at time without prior notice.

All our equipment is in accordance with CE.

Our after sales service includes an expert repair team to refit material if required. If repair is not possible we will offer you a suitable replacement.

Please note our general terms of business. We will send them to you on request.

Reprint, even in parts, is only permitted with our approval.

# Your Applications - our Solutions!

Cable and hose reels and balancers by Conductix-Wampfler represent only one of the many solutions made possible by the broad spectrum of Conductix-Wampfler components for the transport of energy, data and fluid media. The solutions we deliver for your applications are based on your specific requirements. In many cases, a combination of several different Conductix-Wampfler systems can prove advantageous. You can count on all of Conductix-Wampfler's Business Units for hands-on engineering support - coupled with the perfect solution to meet your energy management and control needs.



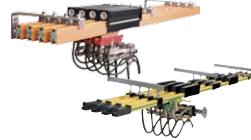
## Cable reels

Motorized reels and spring reels by Conductix-Wampfler hold their own wherever energy, data and media have to cover the most diverse distances within a short amount of time - in all directions, fast and safe.



## Festoon systems

It's hard to imagine Conductix-Wampfler cable trolleys not being used in virtually every industrial application. They're reliable and robust and available in an enormous variety of dimensions and designs.



## Conductor rails

Whether they're enclosed conductor rails or expandable single-pole systems, the proven conductor rails by Conductix-Wampfler reliably move people and material.



## Non-insulated conductor rails

Extremely robust, non-insulated conductor rails with copper heads or stainless steel surfaces provide the ideal basis for rough applications, for example in steel mills or shipyards.



## Energy guiding chains

The "Jack of all trades" when it comes to transferring energy, data, air and fluid hoses. With their wide range, these energy guiding chains are the ideal solution for many industrial applications.



## Slip ring assemblies

Whenever things are really "moving in circles", the proven slip ring assemblies by Conductix-Wampfler ensure the flawless transfer of energy and data. Here, everything revolves around flexibility and reliability!



## Inductive Power Transfer IPT®

The no-contact system for transferring energy and data. For all tasks that depend on high speeds and absolute resistance to wear.



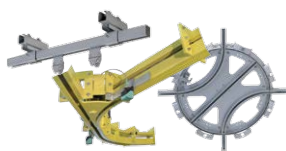
## Reels, retractors and balancers

Whether for hoses or cables, as classical reels or high-precision positioning aids for tools, our range of reels and spring balancers take the load off your shoulders.



## Jib boom

Complete with tool transporters, reels, or an entire media supply system - here, safety and flexibility are key to the completion of difficult tasks.



## Conveyor systems

Whether manual, semiautomatic or with Power & Free – flexibility is achieved with full customization concerning layout and location.



# www.conductix.com

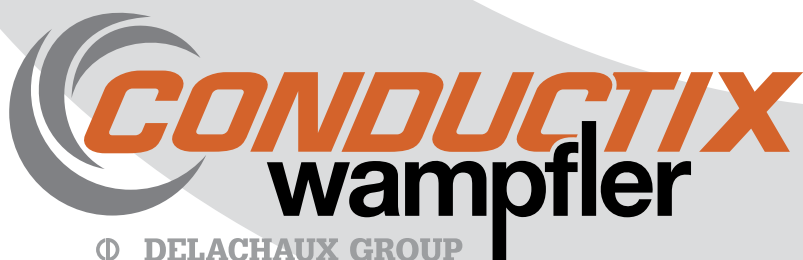
## **Conductix-Wampfler**

has just one critical mission:

To provide you with energy and data transmission systems that will keep your operations up and running 24/7/365.

To contact your nearest sales office, please refer to:

[www.conductix.com/  
contact-search](http://www.conductix.com/contact-search)



DELACHAUX GROUP